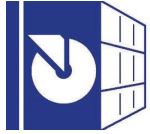




THE ULTIMATE TOOL
FOR SAFETY COMMUNICATION



Caster-Rack
Systems Ltd.



BANNER STAKES *PLUS*: CART PACKAGE



email: sales@caster-rack.com / Web: caster-rack.com / Ph: 902-468-1880



PLUS CART PACKAGES



PLUS CART PACKAGE

- PLUS Cart Package Includes:
 - (1) PLUS Cart
 - (5) PLUS Stanchions
 - (5) PLUS Bases
 - (5) PLUS Banner Heads



PLUS CART PACKAGE WITH TRAY

- PLUS Cart Package with Tray Includes:
 - (1) PLUS Cart
 - (5) PLUS Stanchions
 - (5) PLUS Bases
 - (5) PLUS Banner Heads
 - (1) Cart Accessory Tray
- Accessory Tray efficiently transports a wide variety of work related materials (ie: small tools, jan/san products, etc) and provides convenient storage to improve organization

- Carts are made of industrial strength metal
- Allows for quick application of up to 75' of barrier system
- Foot lock brake prevents motion when cart is left unattended
- Industrial wheels for easy maneuverability on all types of surfaces
- Cart holds five adjustable-height stanchions with removable spikes (red, orange, yellow, black)
- Cart holds five low-profile Bases (black)
- Cart holds five 15' retractable belts with push-pin lock system
- Velcro tie downs keep Bases firmly in place so they cannot fall or tip with movement
- Foam handle for comfort
- Suitable for indoor/outdoor use
- Rust-Proof



PLUS CART PACKAGES

PLUS CART PACKAGE

MFG PART NO.	ITEM DESCRIPTION
PL4001	PLUS Cart Package, Yellow "Caution" Banner
PL4122	PLUS Cart Package, Yellow Double-Sided "Caution" Banner
PL4002	PLUS Cart Package, Yellow "Caution-Cuidado" Banner
PL4078	PLUS Cart Package, Yellow "Caution-Do Not Enter" Banner
PL4003	PLUS Cart Package, Yellow "Wet Floor" Banner
PL4004	PLUS Cart Package, Yellow "Authorized Personnel Only" Banner
PL4005	PLUS Cart Package, Yellow "Cleaning in Progress" Banner
PL4006	PLUS Cart Package, Yellow "Out of Service" Banner
PL4007	PLUS Cart Package, Yellow "Closed for Maintenance" Banner
PL4008	PLUS Cart Package, Yellow/Black Diagonal Stripe Banner
PL4000-Y	PLUS Cart Package, Blank Yellow Banner
PL4010	PLUS Cart Package, Red "Restricted Area" Banner
PL4011	PLUS Cart Package, Red "Danger - Keep Out" Banner
PL4012	PLUS Cart Package, Red "Stay Behind The Line" Banner
PL4013	PLUS Cart Package, Red "Danger High Voltage Keep Out" Banner
PL4079	PLUS Cart Package, Red "Do Not Enter - Arc Flash Boundary" Banner
PL4014	PLUS Cart Package, Red/White Diagonal Stripe Banner
PL4000-R	PLUS Cart Package, Blank Red Banner
PL4015	PLUS Cart Package, Orange "Keep Area Clear" Banner
PL4016	PLUS Cart Package, Orange "Danger - Biohazard" Banner
PL4017	PLUS Cart Package, Orange "Danger - Forklift Traffic" Banner
PL4000-O	PLUS Cart Package, Blank Orange Banner
PL4000-B	PLUS Cart Package, Blank Black Banner

PLUS CART PACKAGE WITH TRAY

MFG PART NO.	ITEM DESCRIPTION
PL4001T	PLUS Cart Package w/ Tray, Yellow "Caution" Banner
PL4122T	PLUS Cart Package w/ Tray, Yellow Double-Sided "Caution" Banner
PL4002T	PLUS Cart Package w/ Tray, Yellow "Caution-Cuidado" Banner
PL4078T	PLUS Cart Package w/ Tray, Yellow "Caution-Do Not Enter" Banner
PL4003T	PLUS Cart Package w/ Tray, Yellow "Wet Floor" Banner
PL4004T	PLUS Cart Package w/ Tray, Yellow "Authorized Personnel Only" Banner
PL4005T	PLUS Cart Package w/ Tray, Yellow "Cleaning in Progress" Banner
PL4006T	PLUS Cart Package w/ Tray, Yellow "Out of Service" Banner
PL4007T	PLUS Cart Package w/ Tray, Yellow "Closed for Maintenance" Banner
PL4008T	PLUS Cart Package w/ Tray, Yellow/Black Diagonal Stripe Banner
PL4000-YT	PLUS Cart Package w/ Tray, Blank Yellow Banner
PL4010T	PLUS Cart Package w/ Tray, Red "Restricted Area" Banner
PL4011T	PLUS Cart Package w/ Tray, Red "Danger - Keep Out" Banner
PL4012T	PLUS Cart Package w/ Tray, Red "Stay Behind The Line" Banner
PL4013T	PLUS Cart Package w/ Tray, Red "Danger High Voltage Keep Out" Banner
PL4079T	PLUS Cart Package w/ Tray, Red "Do Not Enter - Arc Flash Boundary" Banner
PL4014T	PLUS Cart Package w/ Tray, Red/White Diagonal Stripe Banner
PL4000-RT	PLUS Cart Package w/ Tray, Blank Red Banner
PL4015T	PLUS Cart Package w/ Tray, Orange "Keep Area Clear" Banner
PL4016T	PLUS Cart Package w/ Tray, Orange "Danger - Biohazard" Banner
PL4017T	PLUS Cart Package w/ Tray, Orange "Danger - Forklift Traffic" Banner
PL4000-OT	PLUS Cart Package w/ Tray, Blank Orange Banner
PL4000-BT	PLUS Cart Package w/ Tray, Blank Black Banner



1 SET

- PLUS Barrier Set (single) Includes:
 - (1) PLUS Banner head or
 - (1) PLUS Receiver Head
 - (1) PLUS Base
 - (1) PLUS Stanchion



SET X2

- PLUS Barrier X2 Set Includes:
 - (1) PLUS Banner head
 - (1) PLUS Receiver Head
 - (2) PLUS Bases
 - (2) PLUS Stanchions



SET X5

- PLUS Barrier X5 Set Includes:
 - (4) PLUS Banner Heads
 - (1) PLUS Receiver Head
 - (5) PLUS Bases
 - (5) PLUS Stanchions

- Banner Head features 15' retractable belt
- Belt is 2.5" wide and made of polyester woven fabric (red, orange, yellow, black)
- Banner Heads secure onto Stanchion with push pins for added stability and security
- Banner Heads can be easily interchanged on the Stanchion
- Stanchion has twist-off removable spike for dual purpose use - in soft ground surfaces with spike or in Base by removing spike
- Stanchion with telescoping stake extends 22" - 42"
- Stanchions available in red, orange, yellow, black
- Low-profile Base for enhanced image (black)
- Base can be filled up to 18lbs with water or 25lbs with sand
- Base includes carry handle for easy portability
- Largest selection of in-stock messages for various applications
- Opportunity to customize belt messages, colors and add branding
- Opportunity to customize stanchion color and add branding
- Suitable for indoor/outdoor use
- Rust-Proof

PLUS BARRIER SETS

MFG PART NO.	ITEM DESCRIPTION
PL4082	PLUS Barrier Set, Yellow "Caution"
PL4083	PLUS Barrier Set, Yellow Double-Sided "Caution"
PL4084	PLUS Barrier Set, Yellow "Caution-Cuidado"
PL4085	PLUS Barrier Set, Yellow "Caution-Do Not Enter"
PL4086	PLUS Barrier Set, Yellow "Wet Floor"
PL4087	PLUS Barrier Set, Yellow "Authorized Personnel Only"
PL4088	PLUS Barrier Set, Yellow "Cleaning in Progress"
PL4089	PLUS Barrier Set, Yellow "Out of Service"
PL4090	PLUS Barrier Set, Yellow "Closed for Maintenance"
PL4091	PLUS Barrier Set, Yellow/Black Diagonal Stripe
PL4092	PLUS Barrier Set, Blank Yellow Banner
PL4093	PLUS Barrier Set, Red "Restricted Area"
PL4094	PLUS Barrier Set, Red "Danger-Keep Out"
PL4095	PLUS Barrier Set, Red "Stay Behind the Line"
PL4096	PLUS Barrier Set, Red "Danger High Voltage Keep Out"
PL4097	PLUS Barrier Set, Red "Do Not Enter-Arc Flash Boundary"
PL4098	PLUS Barrier Set, Red/White Diagonal Stripe
PL4099	PLUS Barrier Set, Blank Red Banner
PL4100	PLUS Barrier Set, Orange "Keep Area Clear"
PL4101	PLUS Barrier Set, Orange "Danger - Biohazard"
PL4102	PLUS Barrier Set, Orange "Danger-Forklift Traffic"
PL4103	PLUS Barrier Set, Blank Orange Banner
PL4104	PLUS Barrier Set, Blank Black Banner
PL4105	PLUS Barrier Set, Receiver Head, Black
PL4117	PLUS Barrier Set, Receiver Head, Yellow
PL4118	PLUS Barrier Set, Receiver Head, Red
PL4119	PLUS Barrier Set, Receiver Head, Orange
PL4282	PLUS Barrier Set X2, Yellow "Caution"
PL4283	PLUS Barrier Set X2, Yellow Double-Sided "Caution"
PL4284	PLUS Barrier Set X2, Yellow "Caution-Cuidado"
PL4285	PLUS Barrier Set X2, Yellow "Caution-Do Not Enter"
PL4286	PLUS Barrier Set X2, Yellow "Wet Floor"
PL4287	PLUS Barrier Set X2, Yellow "Authorized Personnel Only"
PL4288	PLUS Barrier Set X2, Yellow "Cleaning in Progress"
PL4289	PLUS Barrier Set X2, Yellow "Out of Service"
PL4290	PLUS Barrier Set X2, Yellow "Closed for Maintenance"
PL4291	PLUS Barrier Set X2, Yellow/Black Diagonal Stripe
PL4292	PLUS Barrier Set X2, Blank Yellow Banner
PL4293	PLUS Barrier Set X2, Red "Restricted Area"
PL4294	PLUS Barrier Set X2, Red "Danger-Keep Out"
PL4295	PLUS Barrier Set X2, Red "Stay Behind the Line"
PL4296	PLUS Barrier Set X2, Red "Danger High Voltage Keep Out"

MFG PART NO.	ITEM DESCRIPTION
PL4297	PLUS Barrier Set X2, Red "Do Not Enter-Arc Flash Boundary"
PL4298	PLUS Barrier Set X2, Red/White Diagonal Stripe
PL4299	PLUS Barrier Set X2, Blank Red Banner
PL4200	PLUS Barrier Set X2, Orange "Keep Area Clear"
PL4201	PLUS Barrier Set X2, Orange "Danger - Biohazard"
PL4202	PLUS Barrier Set X2, Orange "Danger-Forklift Traffic"
PL4203	PLUS Barrier Set X2, Blank Orange Banner
PL4204	PLUS Barrier Set X2, Blank Black Banner
PL4582	PLUS Barrier Set X5, Yellow "Caution"
PL4583	PLUS Barrier Set X5, Yellow Double-Sided "Caution"
PL4584	PLUS Barrier Set X5, Yellow "Caution-Cuidado"
PL4585	PLUS Barrier Set X5, Yellow "Caution-Do Not Enter"
PL4586	PLUS Barrier Set X5, Yellow "Wet Floor"
PL4587	PLUS Barrier Set X5, Yellow "Authorized Personnel Only"
PL4588	PLUS Barrier Set X5, Yellow "Cleaning in Progress"
PL4589	PLUS Barrier Set X5, Yellow "Out of Service"
PL4590	PLUS Barrier Set X5, Yellow "Closed for Maintenance"
PL4591	PLUS Barrier Set X5, Yellow/Black Diagonal Stripe
PL4592	PLUS Barrier Set X5, Blank Yellow Banner
PL4593	PLUS Barrier Set X5, Red "Restricted Area"
PL4594	PLUS Barrier Set X5, Red "Danger-Keep Out"
PL4595	PLUS Barrier Set X5, Red "Stay Behind the Line"
PL4596	PLUS Barrier Set X5, Red "Danger High Voltage Keep Out"
PL4597	PLUS Barrier Set X5, Red "Do Not Enter-Arc Flash Boundary"
PL4598	PLUS Barrier Set X5, Red/White Diagonal Stripe
PL4599	PLUS Barrier Set X5, Blank Red Banner
PL4500	PLUS Barrier Set X5, Orange "Keep Area Clear"
PL4501	PLUS Barrier Set X5, Orange "Danger - Biohazard"
PL4502	PLUS Barrier Set X5, Orange "Danger-Forklift Traffic"
PL4503	PLUS Barrier Set X5, Blank Orange Banner
PL4504	PLUS Barrier Set X5, Blank Black Banner





PLUS WALL MOUNT SYSTEM AND KITS



PLUS WALL MOUNT SYSTEM

- PLUS Wall Mount System Includes:
 - (1) PLUS Wall Mount Kit
 - (1) PLUS Banner Head



PLUS WALL MOUNT KIT

- PLUS Wall Mount Kit includes:
 - Head Wall Mount
 - Wall Receiver
 - (6) Wood Screws
 - (6) Wall Anchors
 - (4) Zip Ties

- Holds 15' Banner Head
- Compatible with push pin lock for added security
- Provides versatility, portability and convenience
- Allows for easy warnings alleviating traffic in work areas
- Ideal for blocking hallways, aisles, restrooms, corridors, and more
- Designed to be surface mounted for use when floor space is limited
- Suitable for indoor/outdoor use

MFG

PART NO. ITEM DESCRIPTION

PL4106	PLUS Wall Mount System, Yellow "Caution"
PL4106-DS	PLUS Wall Mount System - Yellow Double-Sided "Caution" Banner
PL4107	PLUS Wall Mount System, Yellow "Caution-Cuidado"
PL4108	PLUS Wall Mount System, Yellow "Caution-Do Not Enter"
PL4123	PLUS Wall Mount System - Yellow "Wet Floor" Banner
PL4109	PLUS Wall Mount System, Yellow "Authorized Personnel Only"
PL4110	PLUS Wall Mount System, Yellow "Cleaning in Progress"
PL4111	PLUS Wall Mount System, Yellow "Out of Service"
PL4112	PLUS Wall Mount System, Yellow "Closed for Maintenance"
PL4121	PLUS Wall Mount System - Yellow/Black Diagonal Stripe Banner
PL4124	PLUS Wall Mount System - Blank Yellow Banner
PL4113	PLUS Wall Mount System, Red "Restricted Area"
PL4114	PLUS Wall Mount System, Red "Danger-Keep Out"
PL4125	PLUS Wall Mount System - Red "Stay Behind the Line" Banner
PL4115	PLUS Wall Mount System, Red "Danger High Voltage Keep Out"
PL4116	PLUS Wall Mount System, Red "Do Not Enter-Arc Flash Boundary"
PL4126	PLUS Wall Mount System - Red/White Diagonal Stripe Banner
PL4127	PLUS Wall Mount System - Blank Red Polyester Banner
PL4120	PLUS Wall Mount System, Orange "Danger-Forklift Traffic"
PL4128	PLUS Wall Mount System - Orange "Keep Area Clear" Banner
PL4129	PLUS Wall Mount System - Blank Orange Polyester Banner
PL4132	PLUS Wall Mount System - Blank Black Polyester Banner
PL4066	PLUS Wall Mount Kit

PLUS SYSTEM ACCESSORY ITEMS



**PLUS BARRIER SYSTEM
SIGN BRACKET**

- Includes (1) Sign Holder and (1) Bracket Attachment (PLUS Banner Head sold separately)
- Attaches to the top of PLUS Banner Head to enhance marketing visibility and safety communication
- Holds 7x11 acrylic sign



PLUS BARRIER SYSTEM LIGHT KIT

- Includes (1) Red LED Strobe/Solid light and (1) Bracket Attachment (PLUS Banner Head sold separately)
- Light Kit attaches to the top of the PLUS Banner Head to increase visibility of safety barrier



**MAGNETIC ATTACHMENT FOR
PLUS BANNER HEAD**

- Includes (1) Magnetic Attachment
- Connect the Magnetic Attachment to the PLUS Banner Head in order to make the ribbon end magnetic
- Allows user to quickly connect the retractable belt to any magnetic/metal surface
- Enables user to Set-up barrier around any safety hazard and connect the receiving end to a metal pole, work truck, job box, warehouse racks, machines, etc.

MFG PART NO.	ITEM DESCRIPTION
PL4190	Magnetic Attachment for PLUS Banner Head
MHPL4171R	Red Magnetic LED Strobe/Solid Light
PL4130	PLUS Barrier System Sign Bracket
PL4140	PLUS Barrier System Light Kit



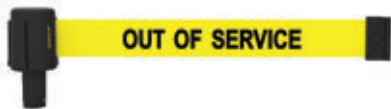


PLUS LINE COMPONENTS AND ACCESSORIES



UTILITY BAG

- Ideal for carrying barrier system components to and from the job-site
- Holds 10 *PLUS* Stanchions and 10 *PLUS* Banner Heads (Stanchions and Banner Heads sold separately)
- Durable, water and soil-resistant heavy canvas material
- Interior zipper pocket to secure Banner Heads
- Framed ends maintain bag's shape



BANNER HEAD

- Banner Heads sold in single units and in 5 packs
- Banner Head is made of rust-proof plastic with SS components
- Retractable belt extends to 15 feet and is made of 2.5" wide heavy-duty woven polyester fabric that won't fray or pucker
- *PLUS* Banner Heads are available in Yellow, Orange, Red, Black
- *PLUS* Banner Heads secure onto *PLUS* Stanchion with push-pin lock system for added stability and security
- Over 20 safety-related messages featured in bold black lettering
- High visibility under all weather conditions
- Banner Head includes 3 receiver slots that allow for gridding and delineation of work area in any configuration
- Suitable for indoor/outdoor use
- Custom belt colors and messages available



PLUS CART ACCESSORY TRAY

- Efficiently transports a wide variety of work-related materials (ie: small tools, jan/san products, etc) and provides convenient storage to improve organization
- Perfect for storing additional Banner Heads and accessories
- Holds up to 30lbs
- Custom made to fit on the Banner Stakes *PLUS* Barrier System Cart
- Made of durable plastic
- Includes cup holder
- Rust-proof



STANCHION

- *PLUS* Stanchions sold in single units and in 5 packs
- Item is available in Yellow, Orange, Red, and Black
- Stanchion is made of rust-proof plastic and has twist-off removable spike for dual purpose use - in soft ground surfaces with spike or in Base by removing spike
- Stanchion includes built-in dual spike and footpad for easy soft ground insertion
- Stanchion has telescoping stake that extends up to 42"
- Pack of 5 stanchions includes 1 spike bag for convenient storage when spikes are not being used



BASE

- *PLUS* Bases are sold in single units and in 5-packs
- *PLUS* Base is made of Rust-Proof Plastic
- Low-profile Black Base for enhanced image
- Base can be filled up to 18lbs with water or 25lbs with sand
- Base includes carry handle for easy portability
- Suitable for indoor/outdoor use
- Rust Proof

PLUS LINE COMPONENTS AND ACCESSORIES

MFG PART NO.	ITEM DESCRIPTION
PL4018	PLUS Yellow Plastic Stake
PL4019	PLUS Yellow Plastic Stake (Pack of 5)
PL4020	PLUS Orange Plastic Stake
PL4021	PLUS Orange Plastic Stake (Pack of 5)
PL4022	PLUS Red Plastic Stake
PL4023	PLUS Red Plastic Stake (Pack of 5)
PL4070	PLUS Black Plastic Stake
PL4071	PLUS Black Plastic Stake (Pack of 5)
PL4024	PLUS Black Plastic Banner Base
PL4025	PLUS Black Plastic Banner Base (Pack of 5)
PL4026	PLUS Yellow "Caution" Banner
PL4027	PLUS Yellow "Caution" Banner (Pack of 5)
PL4068	PLUS Yellow Double Sided "Caution" Banner
PL4069	PLUS Yellow Double Sided "Caution" Banner (pack of 5)
PL4028	PLUS Yellow "Caution-Cuidado" Banner
PL4029	PLUS Yellow "Caution-Cuidado" Banner (Pack of 5)
PL4074	PLUS Yellow "Caution-Do Not Enter" Banner
PL4075	PLUS Yellow "Caution-Do Not Enter" Banner (Pack of 5)
PL4030	PLUS Yellow "Wet Floor" Banner
PL4031	PLUS Yellow "Wet Floor" Banner (Pack of 5)
PL4032	PLUS Yellow "Authorized Personnel Only" Banner
PL4033	PLUS Yellow "Authorized Personnel Only" Banner (Pack of 5)
PL4034	PLUS Yellow "Cleaning in Progress" Banner
PL4035	PLUS Yellow "Cleaning in Progress" Banner (Pack of 5)
PL4036	PLUS Yellow "Out of Service" Banner
PL4037	PLUS Yellow "Out of Service" Banner (Pack of 5)
PL4038	PLUS Yellow "Closed for Maintenance" Banner
PL4039	PLUS Yellow "Closed for Maintenance" Banner (Pack of 5)
PL4040	PLUS Yellow/Black Diagonal Stripe Banner
PL4041	PLUS Yellow/Black Diagonal Stripe Banner (Pack of 5)
PL4042	PLUS Blank Yellow Polyester Banner

MFG PART NO.	ITEM DESCRIPTION
PL4043	PLUS Blank Yellow Polyester Banner (Pack of 5)
PL4046	PLUS Red "Restricted Area" Banner
PL4047	PLUS Red "Restricted Area" Banner (Pack of 5)
PL4048	PLUS Red "Danger - Keep Out" Banner
PL4049	PLUS Red "Danger - Keep Out" Banner (Pack of 5)
PL4050	PLUS Red "Stay Behind The Line" Banner
PL4051	PLUS Red "Stay Behind The Line" Banner (Pack of 5)
PL4052	PLUS Red "Danger High Voltage Keep Out" Banner
PL4053	PLUS Red "Danger High Voltage Keep Out" Banner (Pack of 5)
PL4076	PLUS Red "Do Not Enter - Arc Flash Boundary" Banner
PL4077	PLUS Red "Do Not Enter - Arc Flash Boundary" Banner (Pack of 5)
PL4054	PLUS Red/White Diagonal Stripe Banner
PL4055	PLUS Red/White Diagonal Stripe Banner (Pack of 5)
PL4056	PLUS Blank Red Polyester Fabric Banner
PL4057	PLUS Blank Red Polyester Fabric Banner (Pack of 5)
PL4058	PLUS Orange "Keep Area Clear" Banner
PL4059	PLUS Orange "Keep Area Clear" Banner (Pack of 5)
PL4060	PLUS Orange "Danger - Biohazard" Banner
PL4061	PLUS Orange "Danger Biohazard" Banner (Pack of 5)
PL4062	PLUS Orange "Danger - Forklift Traffic" Banner
PL4063	PLUS Orange "Danger - Forklift Traffic" Banner (Pack of 5)
PL4064	PLUS Blank Orange Polyester Banner
PL4065	PLUS Blank Orange Polyester Banner (Pack of 5)
PL4072	PLUS Blank Black Polyester Banner
PL4073	PLUS Blank Black Polyester Banner (Pack of 5)
PL4066	PLUS Wall Mount Kit
PL4067	PLUS Receiver Head
PL4080	PLUS Cart Accessory Tray
PL4081	PLUS Stake Removable Spike
20120065	Utility Bag





MAGNETIC WALL MOUNT BARRIERS



- Includes (1) 30' or 7' retractable belt with magnets integrated into the main body and ribbon handle as well as (2) suction cups
- Secures to more surfaces than any other similar product in the market with powerful magnet or integrated suction cup
- Used for quick closure of docking doors, elevators, escalators, bathrooms, wide aisles, corridors, lock out/tag out of down equipment, electrical rooms creating an Arc Flash Boundary, and many other uses
- Designed to be surface mounted for use when floor space is limited - attaches to magnetic and nonmagnetic surfaces including but not limited to metal, stainless steel, glass, wood and plastic
- Holds suction cups on top and bottom of unit when cups are not in use (2 suction cups included)
- 7' and 30' belts available
- Retractable belt is made of 2.5"-wide polyester fabric
- Features round corners to prevent snagging or injury
- Standard Belt colors include red, orange & yellow (orange available in 30' only)
- Portable; easily fits in a tool bag
- Variety of messages available
- Option to customize messages, colors and add branding
- Additional suction cups may be purchased separately
- No extra accessories required
- Can be used indoors or outdoors

MAGNETIC WALL MOUNT BARRIERS

MFG. PART NO.	ITEM DESCRIPTION
MH5001	30' Magnetic Wall Mount - Yellow "Caution" Banner
MH5002	30' Magnetic Wall Mount - Yellow "Caution - Do Not Enter" Banner
MH5003	30' Magnetic Wall Mount - Yellow "Authorized Personnel Only" Banner
MH5004	30' Magnetic Wall Mount - Yellow "Cleaning in Progress" Banner
MH5005	30' Magnetic Wall Mount - Yellow "Out of Service" Banner
MH5006	30' Magnetic Wall Mount - Yellow "Closed for Maintenance" Banner
MH5007	30' Magnetic Wall Mount - Yellow/Black Diagonal Stripe Banner
MH5008	30' Magnetic Wall Mount - Red "Restricted Area" Banner
MH5009	30' Magnetic Wall Mount - Red "Danger-Keep Out" Banner
MH5010	30' Magnetic Wall Mount - Red "Danger High Voltage Keep Out" Banner
MH5011	30' Magnetic Wall Mount - Red "Do Not Enter - Arc Flash Boundary" Banner
MH5013	30' Magnetic Wall Mount - Orange "Danger- Forklift Traffic" Banner
MH5100	30' Magnetic Wall Mount - Suction Cup
MH7001	7' Magnetic Wall Mount - Yellow "Caution" Banner
MH7002	7' Magnetic Wall Mount - Yellow "Caution - Cuidado" Banner
MH7003	7' Magnetic Wall Mount - Yellow "Caution - Do Not Enter" Banner
MH7013	7' Magnetic Wall Mount - Yellow "Authorized Personnel Only" Banner
MH7004	7' Magnetic Wall Mount - Yellow "Cleaning in Progress" Banner
MH7005	7' Magnetic Wall Mount - Yellow "Out of Service" Banner
MH7006	7' Magnetic Wall Mount - Yellow "Closed for Maintenance" Banner
MH7011	7' Magnetic Wall Mount - Yellow "Room Ready" Banner
MH7007	7' Magnetic Wall Mount - Red "Restricted Area" Banner
MH7008	7' Magnetic Wall Mount - Red "Danger-Keep Out" Banner
MH7009	7' Magnetic Wall Mount - Red "Danger High Voltage Keep Out" Banner
MH7010	7' Magnetic Wall Mount - Red "Do Not Enter - Arc Flash Boundary" Banner
MH7100	7' Magnetic Wall Mount - Suction Cup





MAGNETIC WALL MOUNT BARRIER LIGHT KIT SETS



- Includes (1) 30' or 7' Magnetic Wall Mount Barrier, (1) Red LED Strobe/Solid Light and (1) Bracket Attachment
- Kit is compatible with 30' and 7' Magnetic Wall Mount Barriers
- Attaches to the top of the Magnetic Barrier to increase visibility of safety barrier

MFG	
PART NO.	ITEM DESCRIPTION
MH5001L	30' Magnetic Wall Mount with Light Kit - Yellow "Caution"
MH5002L	30' Magnetic Wall Mount with Light Kit - Yellow "Caution-Do Not Enter"
MH5003L	30' Magnetic Wall Mount with Light Kit - Yellow "Authorized Personnel Only"
MH5004L	30' Magnetic Wall Mount with Light Kit - Yellow "Cleaning In Progress"
MH5005L	30' Magnetic Wall Mount with Light Kit - Yellow "Out of Service"
MH5006L	30' Magnetic Wall Mount with Light Kit - Yellow "Closed for Maintenance"
MH5007L	30' Magnetic Wall Mount with Light Kit - Yellow/Black Diagonal Stripe
MH5008L	30' Magnetic Wall Mount with Light Kit - Red "Restricted Area"
MH5009L	30' Magnetic Wall Mount with Light Kit - Red "Danger-Keep Out"
MH5010L	30' Magnetic Wall Mount with Light Kit - Red "Danger High Voltage Keep Out"
MH5011L	30' Magnetic Wall Mount with Light Kit - Red "Do Not Enter - Arc Flash Boundary"
MH5013L	30' Magnetic Wall Mount with Light Kit - Orange "Forklift Traffic"
MH7001L	7' Magnetic Wall Mount with Light Kit - Yellow "Caution"
MH7002L	7' Magnetic Wall Mount with Light Kit - Yellow "Caution - Cuidado"
MH7003L	7' Magnetic Wall Mount with Light Kit - Yellow "Caution-Do Not Enter"
MH7013L	7' Magnetic Wall Mount with Light Kit - Yellow "Authorized Personnel Only"
MH7004L	7' Magnetic Wall Mount with Light Kit- Yellow "Cleaning in Progress"
MH7005L	7' Magnetic Wall Mount with Light Kit - Yellow "Out of Service"
MH7006L	7' Magnetic Wall Mount with Light Kit - Yellow "Closed for Maintenance"
MH7011L	7' Magnetic Wall Mount with Light Kit - Yellow "Room Ready"
MH7007L	7' Magnetic Wall Mount with Light Kit - Red "Restricted Area"
MH7008L	7' Magnetic Wall Mount with Light Kit - Red "Danger-Keep Out"
MH7009L	7' Magnetic Wall Mount with Light Kit - Red "Danger High Voltage Keep Out"
MH7010L	7' Magnetic Wall Mount with Light Kit - Red "Do Not Enter-Arc Flash Boundary"

MAGNETIC WALL MOUNT BARRIERS





MAGNET WALL MOUNT BARRIER ACCESSORIES



LIGHT KIT FOR MAGNETIC BARRIERS

- Includes (1) Red LED Strobe/Solid light and (1) Bracket Attachment
- Kit available for 30' and 7' Magnetic Wall Mount Barriers
- Attaches to the top of the Barrier to increase visibility of safety barrier



CONNECTOR

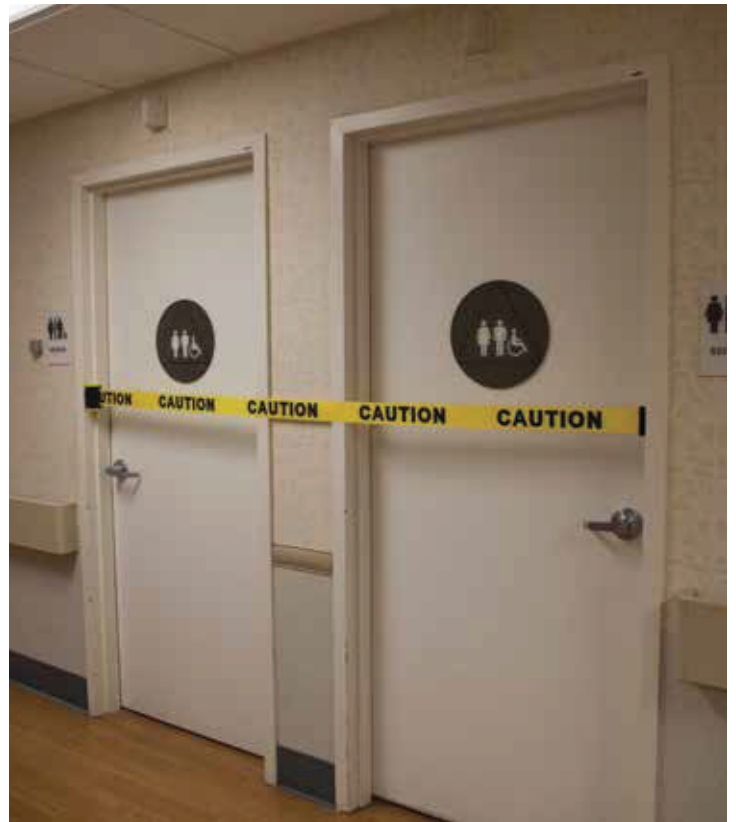
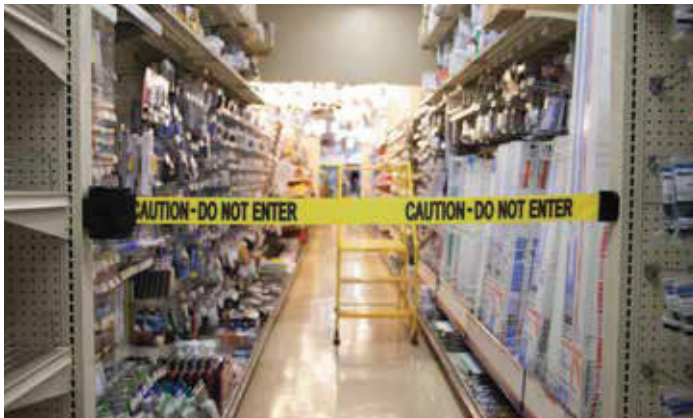
- Includes (1) Connector
- Allows you to use a Magnetic Wall Mount Barrier with a PLUS Banner Head
- Available for 30' and 7' Magnetic Wall Mount Barriers
- Opens up ability to start your barrier on a magnetic surface (attach from wall to stanchion) and extend to a stanchion
- Added portability and temporary use
- Material: Plastic with Steel screws

MFG

PART NO.

ITEM DESCRIPTION

MH5120	Light Kit for 30' Magnetic Belt Barrier
MH7120	Light Kit for 7' Magnetic Belt Barrier
MH5110	Connector for 30' Magnetic Wall Mount Barrier to PLUS Banner Head
MH7110	Connector for 7' Magnetic Wall Mount Barrier to PLUS Banner Head





SOME OF OUR SATISFIED CUSTOMERS:



email: sales@caster-rack.com / Web: caster-rack.com / Ph: 902-468-1880