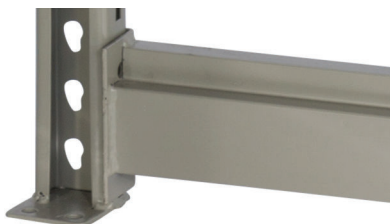


SYSTEM

800

WIDE SPAN SHELVING



- **ONE-PIECE WELDED FRAME.**
- **TEAR-DROP SLOT DESIGN.**
- **VERTICALLY ADJUSTABLE ON 1 1/2" CENTRES.**
- **BUILD-IN SAFETY PINS.**

- **SEAMLESSLY WELDED 3/4" STEP BEAMS.**
- **CHOICES OF DROP-IN MESH DECKS, 6" STEEL PANELS, OR ASPENITE SHELVES WITH WOOD SUPPORT.**

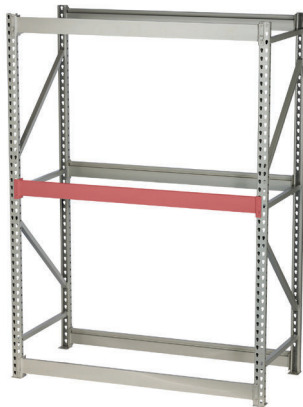
FRAMES



- One-Piece Welded Frame Design.
- 14 Ga. Steel Roll Formed Posts.
- 14 Ga. Seamlessly Welded Tube Bracing.
- Welded-On Steel Foot Plates With 1/4" Holes For Floor Anchoring.

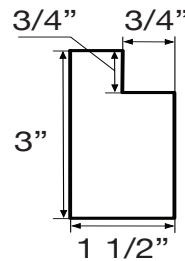
Part No.	Depth	Height
801 1872	18"	72"
801 1896	18"	96"
801 18120	18"	120"
801 2472	24"	72"
801 2484	24"	84"
801 2496	24"	96"
801 24120	24"	120"
801 3072	30"	72"
801 3096	30"	96"
801 30120	30"	120"
801 3672	36"	72"
801 3696	36"	96"
801 36120	36"	120"

BEAMS



- Seamlessly Welded Steel Beams For Extra Strength.
- 2 Rivets On Each End Plate For Easy Installation.
- Built-In Self-Locking Mangalloy Safety Pins.

Part No.	Dimensions	UDL Capacity
802 48	48" x 3"	2200 lb
802 72	72" x 3"	1800 lb
802 96	96" x 3"	1400 lb



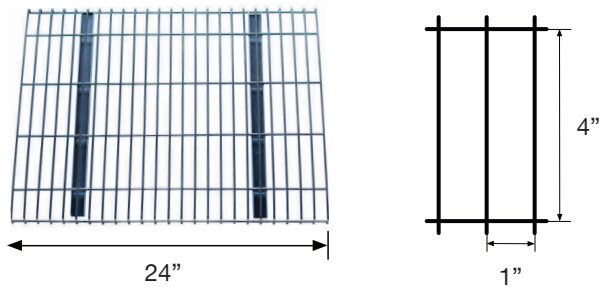
SUPPORTS



- Provides Extra Supports For Wood Shelves.
- Recommended For 30" and 36" Depths.

Part No.	Length	Thickness
807 24	24"	1"
807 30	30"	1"
802 36	36"	1"

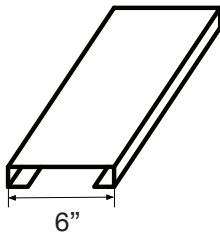
WIRE DECKS



- Galvanized In-Step Steel Wire Decks.
- 7 Ga. Steel Wire.
- 14 Ga. Steel Support Channels.
- Specially Designed To Fit Perfectly In System 800 Wide Span Shelving.

Part No.	Depth	Width
804 18	16 1/4"	24"
804 24	22 1/4"	24"
804 30	28 1/4"	24"
804 36	34 1/4"	24"

STEEL PANELS



- Galvanized Drop-In Steel Panels.
- 17 Ga. Steel
- Specially Designed To Fit Perfectly In System 800 Wide Span Shelving.

Part No.	Depth	Width
805 18	16 1/4"	6"
805 24	22 1/4"	6"
805 30	28 1/4"	6"
805 36	34 1/4"	6"

WOOD DECKS



- Canadian Made Oriented Strand Board (OSB).
- Economically Priced Alternative To All-Metal Shelves.

Part No.	Depth	Length
808 1848	16 1/4"	47 1/2"
808 1872	16 1/4"	71 1/2"
808 1896	16 1/4"	95 1/2"
808 2448	22 1/4"	47 1/2"
808 2472	22 1/4"	71 1/2"
808 2496	22 1/4"	95 1/2"
808 3048	28 1/4"	47 1/2"
808 3072	28 1/4"	71 1/2"
808 3096	28 1/4"	95 1/2"
808 3648	34 1/4"	47 1/2"
808 3672	34 1/4"	71 1/2"
808 3696	34 1/4"	95 1/2"

DESIGNED IN CANADA

DISTRIBUTED BY

Caster-Rack Systems Ltd.
20A Margate Drive
Halifax, NS, B3P 1N6
Ph: 902-468-1880

www.caster-rack.com

Email: sales@caster-rack.com